

4

3

2

1

D

D

C

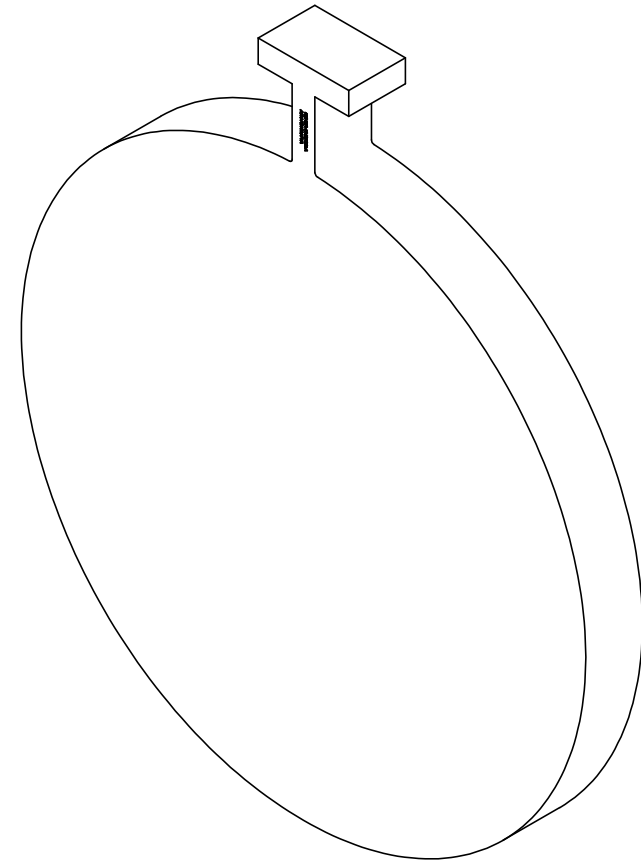
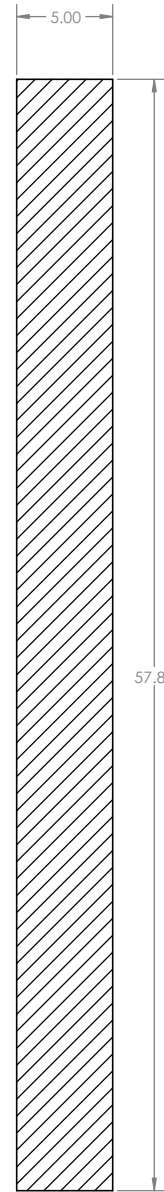
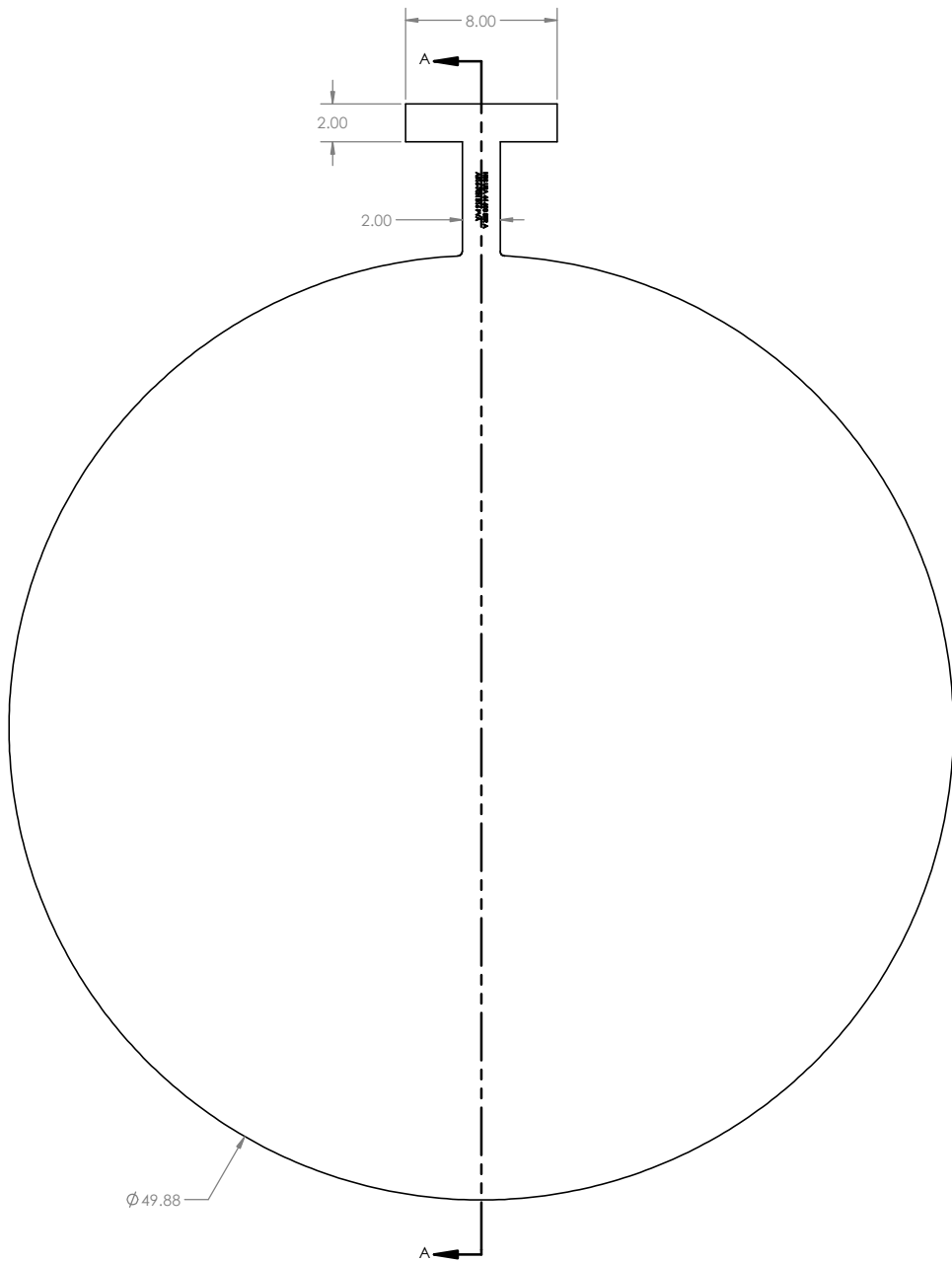
C


B

B

A

A



DO NOT SCALE PRINT		UNLESS OTHERWISE SPECIFIED: OUTSIDE DIAMETER: (+/-0.12) INSIDE DIAMETER: (+/-0.12) THICKNESS TOLERANCES (-ZERO +0.25) ALL UNITS IN INCHES OR POUNDS		HYDROBLIND -ISOLUTIONS
 <small>THIRD ANGLE PROJECTION</small>		SHEET 1 OF 1		
MATERIAL: CUSTOMER REQUESTED		DATE: 06/12/2020		DRAWING TITLE: 44 CL 600 SER A PADDLE BLIND T HANDLE
SCALE: 1:5		DIMENSIONS & TOLERANCES TO BE IN ACCORDANCE WITH ASME B16.47		
SIZE: C	DRAWING NUMBER: 6PBO01	WEIGHT: 2,799 lb	REV: 00	

4

3

2

1