

4

3

2

1

D

D

C

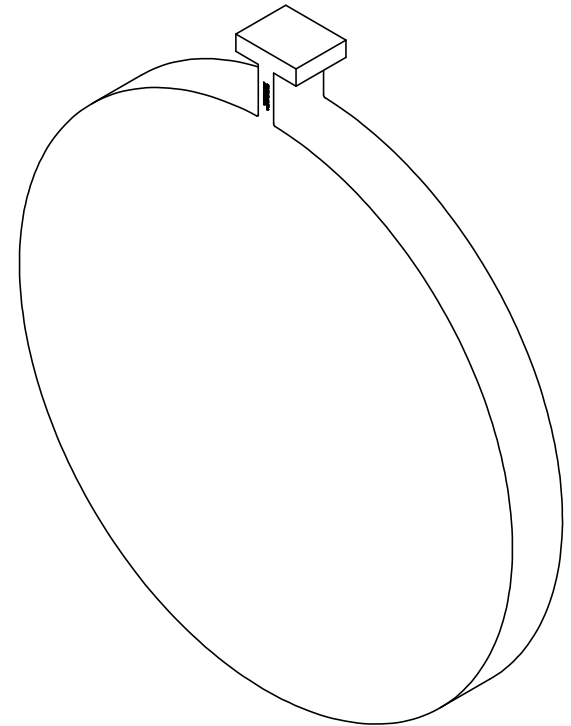
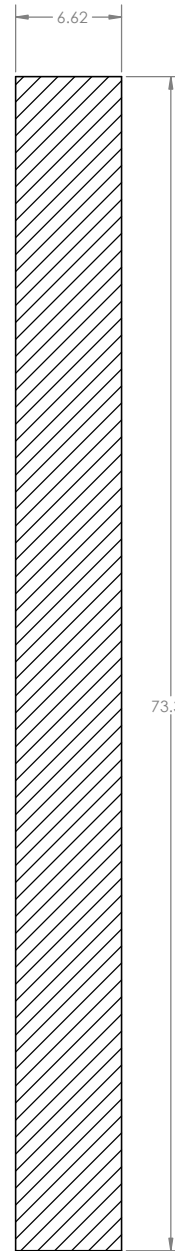
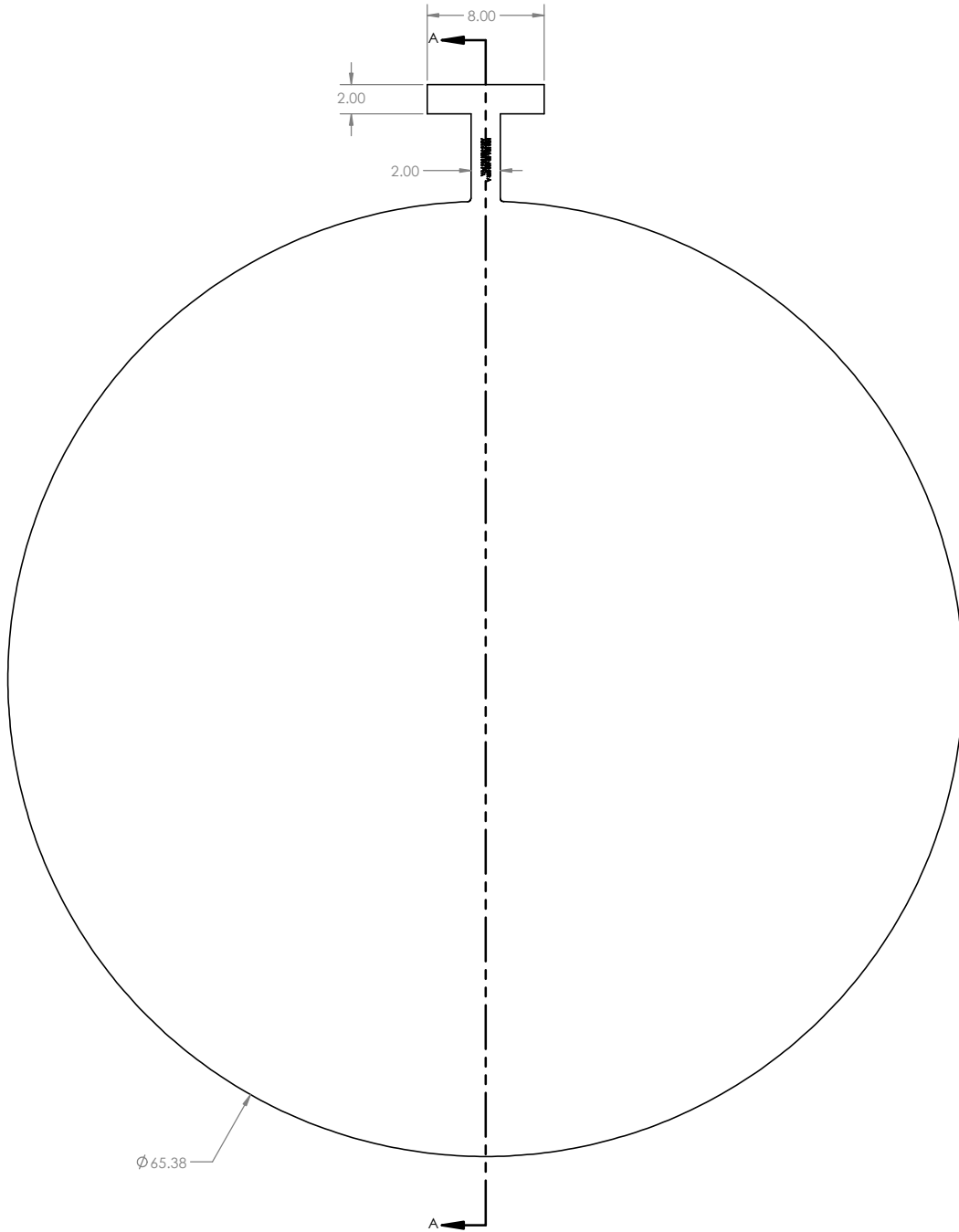
C

B

B

A

A



DO NOT SCALE PRINT		UNLESS OTHERWISE SPECIFIED: OUTSIDE DIAMETER: (+/-0.12) INSIDE DIAMETER: (+/-0.12) THICKNESS TOLERANCES (-ZERO +0.25) ALL UNITS IN INCHES OR POUNDS		HYDROBLIND -ISOLUTIONS
MATERIAL: CUSTOMER REQUESTED		SHEET 1 OF 1		
DATE: 06/12/2020	DIMENSIONS & TOLERANCES TO BE IN ACCORDANCE WITH ASME B18.27	WEIGHT 6,339 lb	DRAWING TITLE: 58 CL 600 SER A PADDLE BLIND T HANDLE	
SCALE 1:6	SIZE C	DRAWING NUMBER: 6PBPR1	REV 00	

4

3

2

1