

TOLERANCES

- (A) Outside Diameter: (+/- 0.12)
- (B) Inside Diameter: (+/- 0.12)

THICKNESS

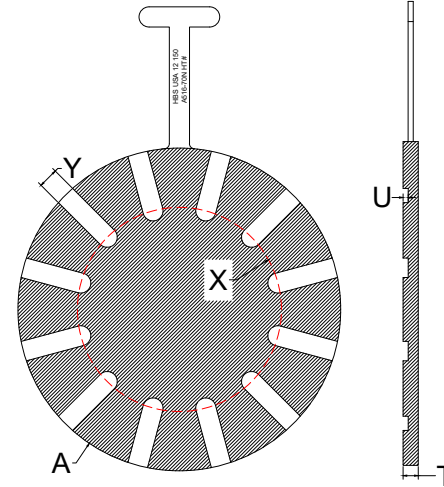
- (T) NPS: ≤ 18 - (HBS + 0.12, -0)
- (T) NPS: ≥ 20 - (HBS + 0.19, -0)
- (T) NPS: ≥ 26 - (HBS + 0.25, -0)

- (X) ID Groove (+/- 0.12)
- (Y) Width of Slot (+/- 0.12)
- (U) Depth of Slot (+/- 0.06)

STANDARD FINISHES

- Smooth Mill (Some Scale May Be Apparent)
- Spiral Serrated Machine (125-250 AARH)

All Units: Inches, Pounds



24 HOUR CALL OUT
409.736.7665

150#	OD (A)	THICKNESS (T)	# GROOVES (Z)	ID GROOVE (X)	GROOVE WIDTH (Y)	DEPTH OF GROOVE (U)	WEIGHT
1/2	1.75	0.88	4	0.25	0.25	0.25	3
3/4	2.12	0.88	4	0.43	0.25	0.25	3
1	2.50	0.88	4	0.60	0.25	0.25	4
1-1/4	2.88	0.88	4	0.90	0.38	0.25	4
1-1/2	3.25	0.88	4	1.10	0.38	0.25	5
2	4.00	0.62	4	1.50	0.50	0.25	4
2-1/2	4.75	0.62	4	1.77	0.75	0.25	5
3	5.25	0.62	4	2.30	0.75	0.25	6
3-1/2	6.25	0.62	8	2.72	0.75	0.25	7
4	6.75	0.62	8	3.15	0.75	0.25	8
5	7.62	0.62	8	4.06	1.00	0.25	10
6	8.62	0.62	8	4.90	1.00	0.25	12
8	10.88	0.62	8	6.87	1.00	0.25	18
10	13.25	0.62	12	8.50	1.00	0.25	26
12	16.00	0.62	12	10.12	1.00	0.25	39
14	17.62	0.62	12	11.18	1.00	0.25	46
16	20.12	0.62	16	12.81	1.00	0.25	59
18	21.50	0.62	16	14.44	1.00	0.25	67
20	23.75	0.62	20	16.06	1.00	0.25	81
24	28.12	0.62	20	19.31	1.00	0.25	112