

### TOLERANCES

- (A) Outside Diameter: (+/- 0.12)
- (B) Inside Diameter: (+/- 0.12)

### THICKNESS

- (T) NPS: ≤ 18 - Per B16.48 (+ 0.12, -0)
- (T) NPS: ≥ 20 - Per B16.48 (+ 0.19, -0)

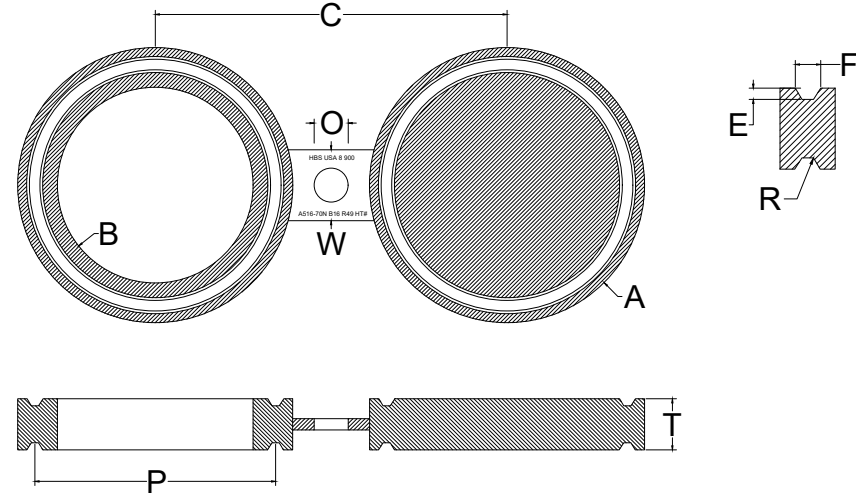
All Units: Inches, Pounds

### RTJ FEMALE GROOVE

- (E) Depth (+0.016, -0)
- (F) Width (+/- 0.008)
- (P) Pitch Diameter (+/- 0.005)

### RADIUS AT BOTTOM

- (R) ≤ 0.06 + 0.03, -0
- (R) >0.06 +/- 0.03
- 23° (angle) = 1/2°



**24 HOUR CALL OUT**  
409.736.7665

1500#	OD (A)	ID (B)	THICKNESS (T)	CENTERLINE (C)	WEB WIDTH (W)	CENTER HOLE (O)	PITCH (P)	GROOVE WIDTH (F)	DEPTH (E)	RING #	WEIGHT
1/2"	2.38	0.84	0.88	3.25	1.50	0.88	1.562	0.344	0.250	12	2
3/4"	2.62	1.05	1.00	3.50	1.75	0.88	1.750	0.344	0.250	14	3
1"	2.81	1.32	1.00	4.00	2.12	1.00	2.000	0.344	0.250	16	4
1-1/4"	3.19	1.66	1.00	4.38	2.12	1.00	2.375	0.344	0.250	18	4
1-1/2"	3.62	1.90	1.12	4.88	2.25	1.12	2.688	0.344	0.250	20	6
2"	4.88	2.38	1.38	6.50	2.12	1.00	3.750	0.469	0.312	24	14
2-1/2"	5.38	2.88	1.50	7.50	2.25	1.12	4.250	0.469	0.312	27	18
3"	6.62	3.50	1.75	8.00	2.88	1.25	5.375	0.469	0.312	35	31
4"	7.62	4.50	1.88	9.50	3.00	1.38	6.375	0.469	0.312	39	43
5"	9.00	5.56	2.12	11.50	3.00	1.62	7.625	0.469	0.312	44	66
6"	9.75	6.62	2.38	12.50	3.12	1.50	8.312	0.531	0.375	46	82
8"	12.50	8.62	2.88	15.50	3.38	1.75	10.625	0.656	0.438	50	159
10"	14.62	10.75	3.25	19.00	5.25	2.00	12.750	0.656	0.438	54	234
12"	17.25	12.75	4.00	22.50	5.25	2.12	15.000	0.906	0.562	58	397
14"	19.25	14.00	4.38	25.00	5.50	2.38	16.500	1.062	0.625	63	547
16"	21.50	16.00	4.88	27.75	5.75	2.62	18.500	1.188	0.688	67	745
18"	24.12	18.00	5.25	30.50	6.00	2.88	21.000	1.188	0.688	71	1,005
20"	26.50	20.00	5.62	32.75	6.50	3.12	23.000	1.312	0.688	75	1,285
24"	31.25	24.00	6.62	39.00	7.00	3.62	27.250	1.438	0.812	79	2,068