

### TOLERANCES

- (A) Outside Diameter: (+/- 0.12)
- (B) Inside Diameter: (+/- 0.12)

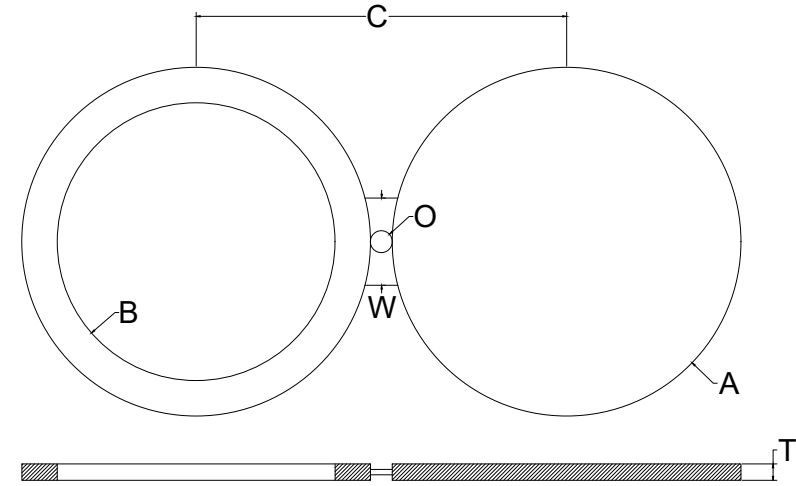
### STANDARD FINISHES

- Smooth Mill (Some Scale May Be Apparent)
- Spiral Serrated Machine (125-250 AARH)

### THICKNESS

- (T) NPS:  $\leq 18$  - Per B16.48 (+ 0.12, -0)
- (T) NPS:  $\geq 20$  - Per B16.48 (+ 0.19, -0)
- (T) NPS:  $\geq 26$  - Per B31.3 (HBS + 0.25, -0)

All Units: Inches, Pounds



**24 HOUR CALL OUT**  
409.736.7665

2500#	OD (A)	ID (B)	THICKNESS (T)	CENTERLINE (C)	WEB WIDTH (W)	CENTER HOLE (O)	WEIGHT
1/2	2.62	0.62	0.38	3.50	1.50	0.88	1
3/4	2.88	0.82	0.38	3.75	1.62	0.88	1
1	3.25	1.05	0.38	4.25	2.50	1.00	2
1-1/4	4.00	1.38	0.50	5.12	2.50	1.12	3
1-1/2	4.50	1.61	0.62	5.75	2.75	1.25	5
2	5.62	2.07	0.62	6.75	2.75	1.12	8
2-1/2	6.50	2.47	0.75	7.75	3.00	1.25	13
3	7.62	3.07	0.88	9.00	3.00	1.38	21
4	9.12	4.03	1.12	10.75	3.50	1.62	37
5	10.88	5.05	1.38	12.75	3.50	1.88	65
6	12.38	6.06	1.62	14.50	3.50	2.12	97
8	15.12	7.81	2.12	17.25	4.00	2.12	187
10	18.62	9.75	2.62	21.25	4.50	2.62	349
12	21.50	11.37	3.12	24.38	4.50	2.88	552