

TOLERANCES

- (A) Outside Diameter: (+/- 0.12)
- (B) Inside Diameter: (+/- 0.12)

THICKNESS

- (T) NPS: ≤ 18 - Per B16.48 (+ 0.12, -0)
- (T) NPS: ≥ 20 - Per B16.48 (+ 0.19, -0)

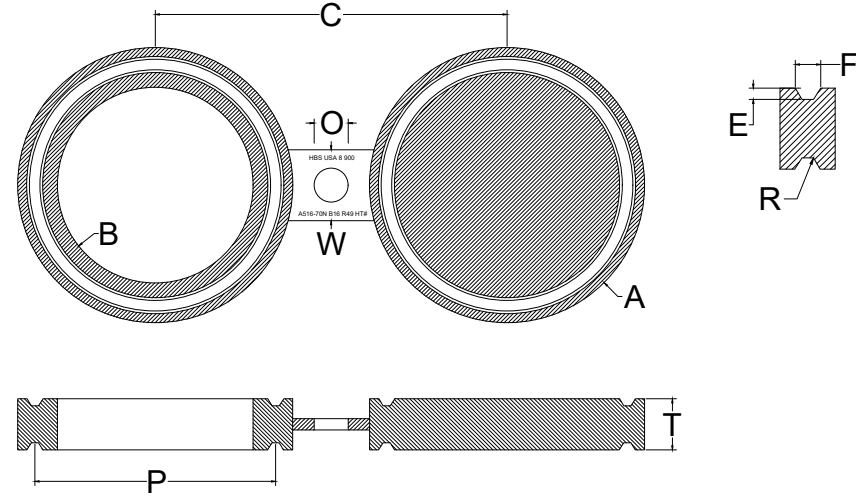
All Units: Inches, Pounds

RTJ FEMALE GROOVE

- (E) Depth (+0.016, -0)
- (F) Width (+/- 0.008)
- (P) Pitch Diameter (+/- 0.005)

RADIUS AT BOTTOM

- (R) ≤ 0.06 + 0.03, -0
- (R) >0.06 +/- 0.03
- 23° (angle) = 1/2°



24 HOUR CALL OUT
409.736.7665

2500#	OD (A)	ID (B)	THICKNESS (T)	CENTERLINE (C)	WEB WIDTH (W)	CENTER HOLE (O)	PITCH (P)	GROOVE WIDTH (F)	DEPTH (E)	RING #	WEIGHT
1/2"	2.56	0.84	1.00	3.50	1.50	0.88	1.688	0.344	0.250	13	3
3/4"	2.88	1.05	1.12	3.75	1.75	0.88	2.000	0.344	0.250	16	4
1"	3.25	1.32	1.12	4.25	2.12	1.00	2.375	0.344	0.250	18	5
1-1/4"	4.00	1.66	1.38	5.12	2.12	1.12	2.844	0.469	0.312	21	10
1-1/2"	4.50	1.90	1.50	5.75	2.38	1.25	3.250	0.469	0.312	23	13
2"	5.25	2.38	1.62	6.75	2.25	1.12	4.000	0.469	0.312	26	19
2-1/2"	5.88	2.88	1.88	7.75	2.38	1.25	4.375	0.531	0.375	28	27
3"	6.62	3.50	2.00	9.00	3.00	1.38	5.000	0.531	0.375	32	36
4"	8.00	4.50	2.50	10.75	3.25	1.62	6.188	0.656	0.438	38	63
5"	9.50	5.56	2.88	12.75	3.50	1.88	7.500	0.781	0.500	42	100
6"	11.00	6.62	3.25	14.50	3.75	2.12	9.000	0.781	0.500	47	149
8"	13.38	8.62	3.88	17.25	3.75	2.12	11.000	0.906	0.562	51	253
10"	16.75	10.75	4.62	21.25	3.58	2.62	13.500	1.188	0.688	55	471
12"	19.50	12.75	5.25	24.38	6.00	2.88	16.000	1.312	0.688	60	716