

### TOLERANCES

- (A) Outside Diameter: (+/- 0.12)
- (B) Inside Diameter: (+/- 0.12)

### STANDARD FINISHES

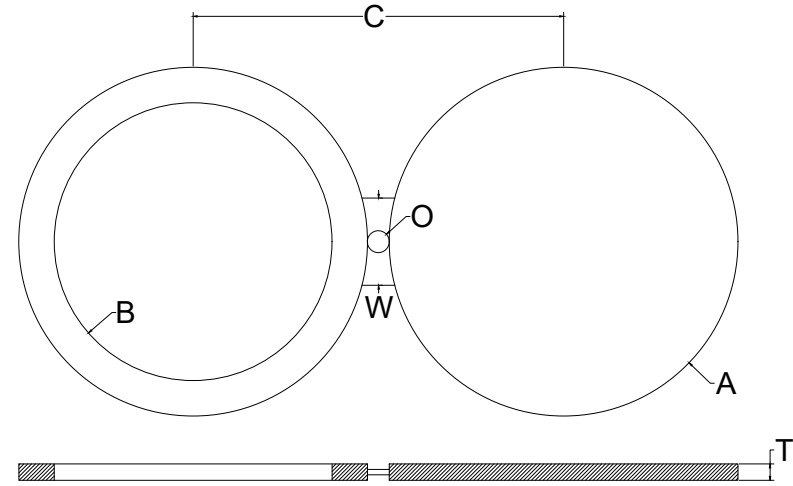
- Smooth Mill (Some Scale May Be Apparent)
- Spiral Serrated Machine (125-250 AARH)

### THICKNESS

- (T) NPS: ≤ 18 - Per B16.48 (+ 0.12, -0)
- (T) NPS: ≥ 20 - Per B16.48 (+ 0.19, -0)
- (T) NPS: ≥ 26 - Per B31.3 (HBS + 0.25, -0)

All Units: Inches, Pounds

**24 HOUR CALL OUT**  
409.736.7665



600#	OD (A)	ID (B)	THICKNESS (T)	CENTERLINE (C)	WEB WIDTH (W)	CENTER HOLE (O)	WEIGHT
1/2	2.00	0.62	0.25	2.62	1.50	0.62	1
3/4	2.50	0.82	0.25	3.25	1.50	0.75	1
1	2.75	1.05	0.25	3.50	2.25	0.75	1
1-1/4	3.12	1.44	0.38	3.88	2.25	0.75	1
1-1/2	3.62	1.68	0.38	4.50	2.62	0.88	2
2	4.25	2.16	0.38	5.00	2.25	0.75	3
2-1/2	5.00	2.64	0.50	5.88	2.62	0.88	5
3	5.75	3.26	0.50	6.62	2.62	0.88	6
3-1/2	6.25	3.76	0.62	7.25	3.00	1.00	9
4	7.50	4.26	0.62	8.50	3.00	1.00	13
5	9.38	5.30	0.75	10.50	3.38	1.12	25
6	10.38	6.36	0.88	11.50	3.38	1.12	34
8	12.50	8.33	1.12	13.75	3.75	1.25	61
10	15.62	10.42	1.38	17.00	4.12	1.38	117
12	17.88	12.39	1.62	19.25	4.12	1.38	175
14	19.25	13.62	1.75	20.75	4.50	1.50	216
16	22.12	15.62	2.00	23.75	4.88	1.62	327
18	24.00	17.62	2.12	25.75	5.25	1.75	397
20	26.75	19.56	2.50	28.50	5.25	1.75	584
24	31.00	23.50	2.88	33.00	6.00	2.00	878