

TOLERANCES

- (A) Outside Diameter: (+/- 0.12)
- (B) Inside Diameter: (+/- 0.12)

THICKNESS

- (T) NPS: ≤ 18 - Per B16.48 (+ 0.12, -0)
- (T) NPS: ≥ 20 - Per B16.48 (+ 0.19, -0)

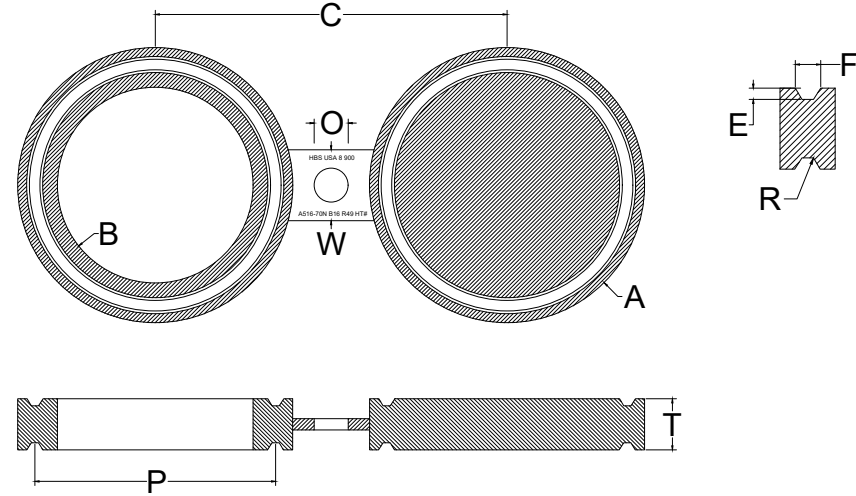
All Units: Inches, Pounds

RTJ FEMALE GROOVE

- (E) Depth (+0.016, -0)
- (F) Width (+/- 0.008)
- (P) Pitch Diameter (+/- 0.005)

RADIUS AT BOTTOM

- (R) ≤ 0.06 + 0.03, -0
- (R) >0.06 +/- 0.03
- 23° (angle) = 1/2°



24 HOUR CALL OUT
409.736.7665

600#	OD (A)	ID (B)	THICKNESS (T)	CENTERLINE (C)	WEB WIDTH (W)	CENTER HOLE (O)	PITCH (P)	GROOVE WIDTH (F)	DEPTH (E)	RING #	WEIGHT
1/2"	2.00	0.84	0.75	2.62	1.50	0.62	1.344	0.281	0.219	11	1
3/4"	2.50	1.05	0.88	3.25	1.75	0.75	1.688	0.344	0.250	13	3
1"	2.75	1.32	0.88	3.50	2.00	0.75	2.000	0.344	0.250	16	3
1-1/4"	3.12	1.66	0.88	3.88	2.00	0.75	2.375	0.344	0.250	18	4
1-1/2"	3.56	1.90	0.88	4.50	2.25	0.88	2.688	0.344	0.250	20	5
2"	4.25	2.38	1.12	5.00	2.25	0.75	3.250	0.469	0.312	23	8
2-1/2"	5.00	2.88	1.25	5.88	2.25	0.88	4.000	0.469	0.312	26	13
3"	5.75	3.50	1.25	6.62	2.25	0.88	4.875	0.469	0.312	31	16
3-1/2"	6.25	4.00	1.38	7.25	2.50	1.00	5.188	0.469	0.312	34	21
4"	6.88	4.50	1.38	8.50	2.50	1.00	5.875	0.469	0.312	37	25
5"	8.25	5.56	1.50	10.50	2.75	1.12	7.125	0.469	0.312	41	38
6"	9.50	6.62	1.75	11.50	3.25	1.12	8.312	0.469	0.312	45	57
8"	11.88	8.62	2.00	13.75	3.75	1.25	10.625	0.469	0.312	49	98
10"	14.00	10.75	2.25	17.00	4.00	1.38	12.750	0.469	0.312	53	146
12"	16.25	12.75	2.50	19.25	4.75	1.38	15.000	0.469	0.312	57	214
14"	18.00	14.00	2.62	20.75	5.00	1.50	16.500	0.469	0.312	61	276
16"	20.00	16.00	2.88	23.75	5.00	1.62	18.500	0.469	0.312	65	364
18"	22.62	18.00	3.12	25.75	5.00	1.75	21.000	0.469	0.312	69	505
20"	25.00	20.00	3.50	28.50	5.00	1.75	23.000	0.531	0.375	73	686
24"	29.50	24.00	4.12	33.00	6.00	2.00	27.250	0.656	0.438	77	1,101