

TOLERANCES

(A) Outside Diameter: (+/- 0.12)
 (B) Inside Diameter: (+/- 0.12)

THICKNESS

(T) NPS: ≤ 18 - Per B16.48 (+ 0.12, -0)
 (T) NPS: ≥ 20 - Per B16.48 (+ 0.19, -0)

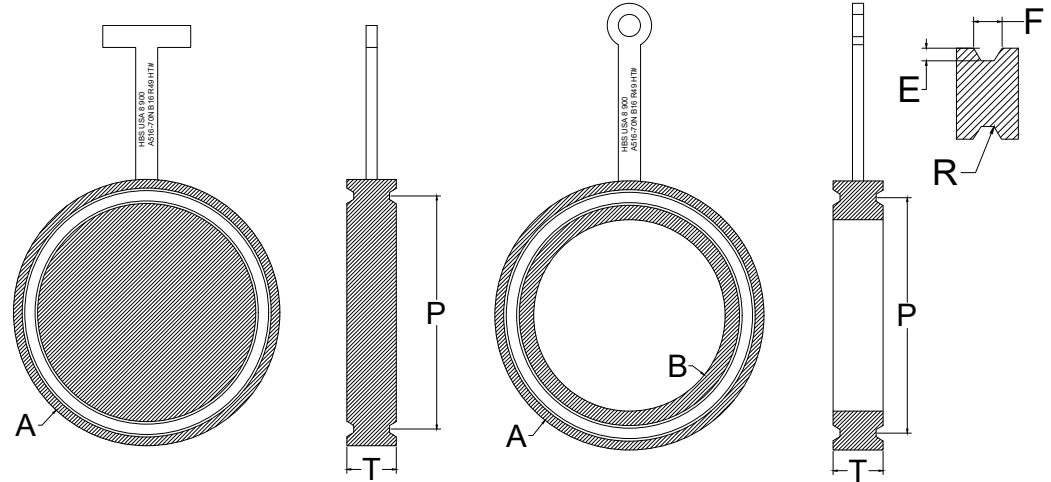
All Units: Inches, Pounds

RTJ FEMALE GROOVE

(E) Depth (+0.016, -0)
 (F) Width (+/- 0.008)
 (P) Pitch Diameter (+/- 0.005)

RADIUS AT BOTTOM

(R) ≤ 0.06 + 0.03, -0
 (R) >0.06 +/- 0.03
 23° (angle) = 1/2°



24 HOUR CALL OUT
 409.736.7665

900#	OD (A)	ID (B)	THICKNESS (T)	PITCH (P)	GROOVE WIDTH (F)	DEPTH (E)	RING #	PADDLE WT	SPACER WT
1/2"	2.38	0.84	0.88	1.562	0.344	0.250	12	1	1
3/4"	2.62	1.05	0.88	1.750	0.344	0.250	14	2	1
1"	2.81	1.32	0.88	2.000	0.344	0.250	16	2	2
1-1/4"	3.19	1.66	1.00	2.375	0.344	0.250	18	3	2
1-1/2"	3.62	1.90	1.00	2.688	0.344	0.250	20	4	3
2"	4.88	2.38	1.25	3.750	0.469	0.312	24	8	6
2-1/2"	5.38	2.88	1.38	4.250	0.469	0.312	27	10	7
3"	6.12	3.50	1.38	4.875	0.469	0.312	31	13	8
4"	7.12	4.50	1.62	5.875	0.469	0.312	37	20	12
5"	8.50	5.56	1.75	7.125	0.469	0.312	41	30	17
6"	9.50	6.62	1.88	8.312	0.469	0.312	45	40	21
8"	12.12	8.62	2.25	10.625	0.469	0.312	49	78	38
10"	14.25	10.75	2.50	12.750	0.469	0.312	53	119	51
12"	16.50	12.75	2.88	15.000	0.469	0.312	57	182	73
14"	18.38	14.00	3.25	16.500	0.656	0.438	62	254	107
16"	20.62	16.00	3.62	18.500	0.656	0.438	66	354	141
18"	23.38	18.00	4.00	21.000	0.781	0.500	70	502	204
20"	25.50	20.00	4.38	23.000	0.781	0.500	74	652	251
24"	30.38	24.00	5.25	27.250	1.062	0.625	78	1,104	415